

HWH Weld Times SPECIAL

Newsletter for friends and business partners of Harms & Wende North America LP, Charlotte (NC)

EDITORIAL

Things are changing and we strengthen our position in North America – we are joining in person and expanding our team to strengthen our connection with customers. This is a very exciting moment for all of us involved. We have about 6000 units in United States only and there are certainly more around.

From my perspective, this is a great moment since HWH management gave the green light to move on. This shows that they see North America as key market and we do all we can to serve our existing customers as we gain for new.



Joerg Eggers
Export Manager
joerg.eggerts@harms-wende.de

Our presence in United States, Canada & Mexico ... large area and we are close.

Today our presence currently covers Canada with company Huys, United States with North Consulting Service (resistance welding), Lincoln Electric (solid state welding) and ERC in Mexico. We now extend our presence with our second own Harms & Wende subsidiary in the Charlotte (NC). This establishes our presence from the very beginning in the North Side of Detroit, Ohio, Tennessee, and now

with our headquarters in the Charlotte (NC), giving us four initial locations. Including our partners in Canada and Mexico, we are operating in a total of six positions. We promised our customers to be close – here we are. We maintain our partners, they kept the flag wonderful up for us for a long time, we now extend with one more. Together we are stronger. We now bring a new product line with

capacitor machines extending our portfolio. One machine is in production, this gives opportunities. From AC thru MFDC to CD welding – we have it all. We look forward working with you.

Fabian Demmer
fabian.demmer@kapkon.de

Joerg Eggers
joerg.eggerts@harms-wende.de

Joerg Winkler
joerg.winkler@kapkon.de

Fabtech 2024 – Orlando

... come around and see us.

October 15th to 17th 2024
Booth W5274

As a kick-off event we will be present at the Fabtech with our own name. Usually, we come to you chatting about your projects – come on over and see us at the fair.

We have a machine at our booth making samples for you to take home. Lets chatt about your projects and what we in bring in benefits fo save time and money.

Not too much talking – we look forward to seeing you in our booth W5274.



- Adaptive feedback welding – no calibration – safe time
- Aluminum spot welding – just weld it
- CD packs with single or double pulse – a problem solver
- Have a standard frame still good an issues – keep it, we solve the weld

IQR – adaptive spot welding for steel materials and HMI X Pegasus ... no calibration – just do it.

IQR is our welding pack running on our medium frequency MFDC inverters GeniusMFI and GeniusHWI series. Just two signals voltage U and current I are

needed to make things happen. Basically, the user sets the weld current minus 10% and the weld time know from traditional resistance welding and

to adaptive. No more no less. Fixed cycle time, no headache – let the inverter do the job.



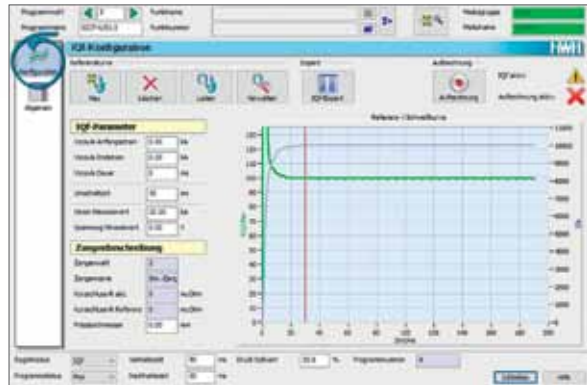
continued on page 2 ...

GeniusMFI408 IQRflex

IQR – adaptive spot welding for steel materials and HMI XPegasus ... no calibration – just do it.



System overview XPegasus



XPegasus HMI IQiflex operator window

continued from page 1 ...

Short commissioning times and no calibration as you need other system saves you time twice. The learning phase is also short – to start with you need none.

XPegasus is the tool to program your units. Clear structured menus and what you see is what you have – very clear, very simple. Graphical windows say more than 1000 words.

- Cost savings
- No time spend for calibration
- Short time to learn due to standard known weld cycle
- No headache
- WYSIWYG: HMI XPegasus only shows what is installed – no searching – just using
- Optional data saving of weld data keeps facts about quality – the proof is yours

Kapkon reports

KAPKON GmbH installs latest machine equipment in the lab



Year 2024 began for KAPKON GmbH with the relocation of the lab equipment in fresh renovated rooms at Bad Salzuflen (Germany). KAPKON has now access to the newest projection welders with their high-level CD (Capacitor Discharge) power sources:

- CD Single Pulse technology (SP) and
- CD Combi Pulse technology (CP)

Any CD unit requires as advantage to the customer significantly lower fusing between typ 16 and 125 A. The entire lab-portfolio consists of 2 “state of the art” gantry type CD-welders:

Gantry frame KKP 12/18 – CP (max. electrode force 30 kN, max. weld energy 18 kJ, max. peak current appr. 210 kA)

Suitable for weld tasks, i. e. projection welding of

- Weld nuts, sruds, screws
- Gas springs, Airbag-burst washers
- Porouse transport layer PTL
- Hot gas filters

“NEW design” gantry frame KKP 170 –CP

The improved design offers an extremely torsion-resistant gantry frame. Mechanical and electrical features have been revised and optimized to customers needs. Reaching a maximum weld energy of up to 169 kJ, up to 1.500.000 A welding current are accessible.

Suitable joints for this type of machine are i.e.:

- Projection welding of gearbox components
- Full-surface filter welding

- Welding of expanded metals and expanded metal laminates
- Big area mesh welding
- Big area welding of bipolar plates
- Welding of pressure accumulators



New design portal frame KKP 170 – CP

All this new lab equipment serves to make case studies for customers. This allows to help customers in very early development stage to make trials and develop production methods. Also small scale paid jobs can be processed. You are very welcome to pay a visit or make a joint online meeting to find out more. In addition, KAPKON will become a partner of the **new HARMS&WENDE branch in Charlotte (NC)**. KAPKON will exhibit one of its CD welders (built according to UL standard) at the FABTECH trade fair in Orlando in October 2024 and will then make this machine available to all customers for trials in its new premises.

This welder will have the following parameters:

C-Frame KKC 12/18 – CP (max. electrode force 30 kN, max. weld energy 18 kJ, max. peak current ca. 180 kA)

We already invite you today to test our machines with your own welding tasks!

..... IMPRINT Issue Weld Times Special | North America Edition

Publisher:
Harms & Wende GmbH & Co. KG, Grossmoorkehre 9,
21079 Hamburg, Phone: +49 40 766 904-0, Fax:
+49 40 766 904-88, www.harms-wende.de

Publishing Company:
Plan-Ad CrossMedia GmbH, Manhagener Allee 100,
22926 Ahrensburg, Phone: +49 4102 70 730-0,
www.katalogkompetenz.de