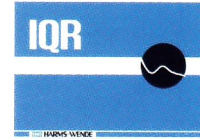
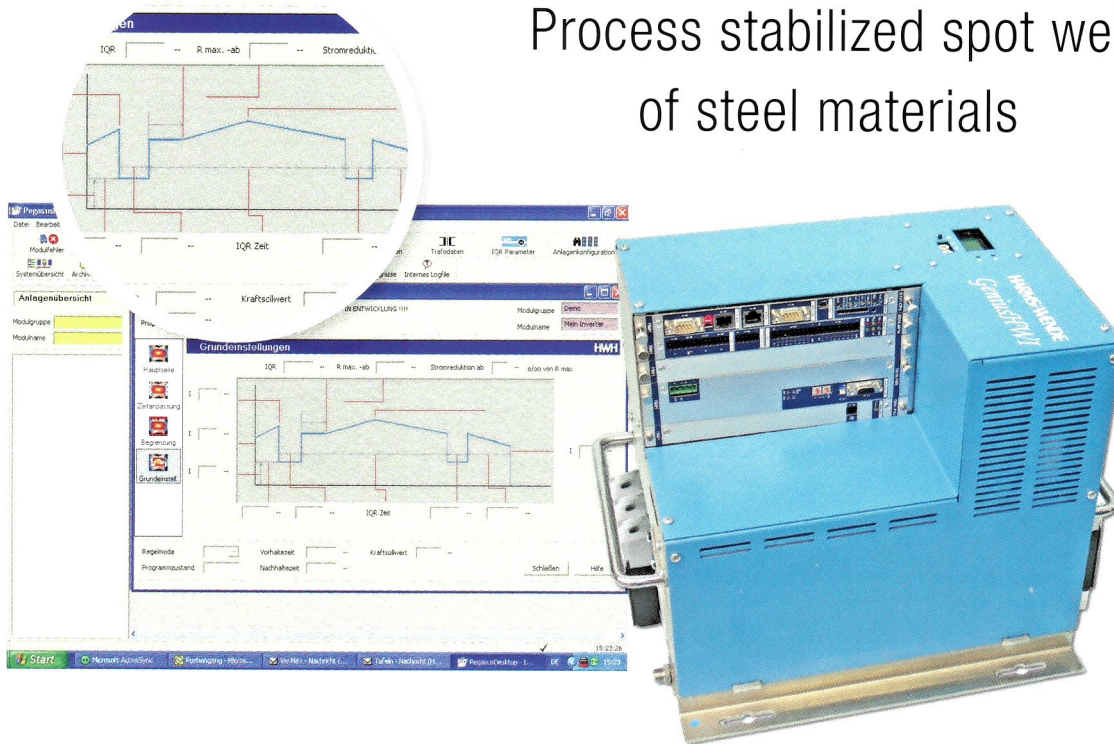


MEDIUM FREQUENCY WELDING SYSTEMS

IQR



Process stabilized spot welding of steel materials

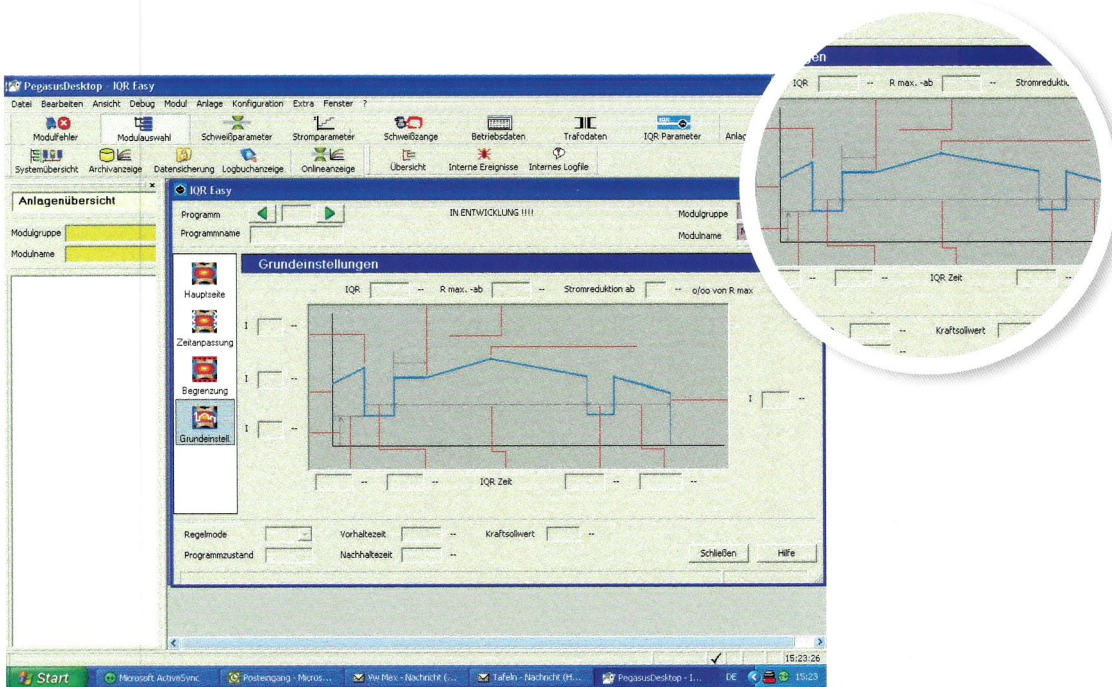


OVERVIEW

IQR is the adaptive spot welding package that creates for process safe weld spots. This is done by using current and voltage without your intervention by extending your welding range. Each weld spot is treated as an individual. IQR does not require a calibration prior to weld. Start in adaptive mode from the first spot. IQR operates with manual and robot guns.

FEATURES

- Equalization of natural fluctuations during the weld process
- No calibration of IQR required. Weld with IQR from the first spot
- Each spot is treated as individual in real-time
- Resistance or power guided weld depends on material possible
- Easy operation grace to very few parameters
- Clear weld cycle structure
 - Pre-pulse (if required)
 - Main pulse (IQR)
 - Post-pulse (if required)
- Short training phase of your staff
- Suitable for manual and robot guns
- Convenient programming through *XPegasus*
- ... and much more



IQR IN DETAIL

IQR is designed for safe welding of steel materials and has been proven through many years. IQR uses the natural parameters of current and voltage. The voltage signal is taken directly on the secondary side of the weld transformer. Their forceps or machine remains therefore free of cables and allows easy maintenance.

With the graphical interface IQR easy programming is quickly done. IQR works with the current as a leading parameter, a fast process time is guaranteed. The necessary welding energy is introduced via the current in the spot faster than with time.

A short process time is beneficial for your production, if in a body-in-white production line or industrial production.

IQR ensures at first stable conditions between the electrodes, and then generates the spot. Internal algorithms evaluate the

resistance curve in real time and intelligent algorithms then provide targeted welding.

A complex programming of the steppers IQR is more unnecessary thanks, this is automatically compensated.

Internal automatic algorithms monitor whether a cable break has occurred when the voltage or current measurement. This ensures security. Resolve the problem immediately or welding in the emergency operation depending on how it allows your production. Your production is the focus.

SYSTEM REQUIREMENTS

- GeniusMFI or GeniusHWI inverter, 600 A typical
- *X*Pegasus HMI