

PC operating software

XPegasus Silver

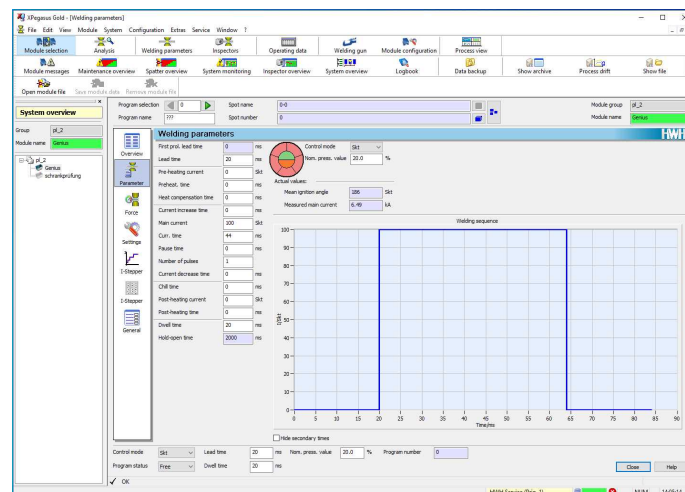
Programming and operating

XPegasus Silver includes all functions to program and operate your weld timer modules. The user gains a continuous and quick overview about the current state of each weld timer module with ability to program it.

XPegasus Silver is the base model with a full set of powerful functions for your production and enables up to 60 users can be defined.

Control effectively

XPegasus offers you functions for easy programming, data back-up and much more besides. Program wizards guide you through complex tasks and guarantee fast and easy operation. For user ease of use, XPegasus shows functions as installed on the weld timer unit only.



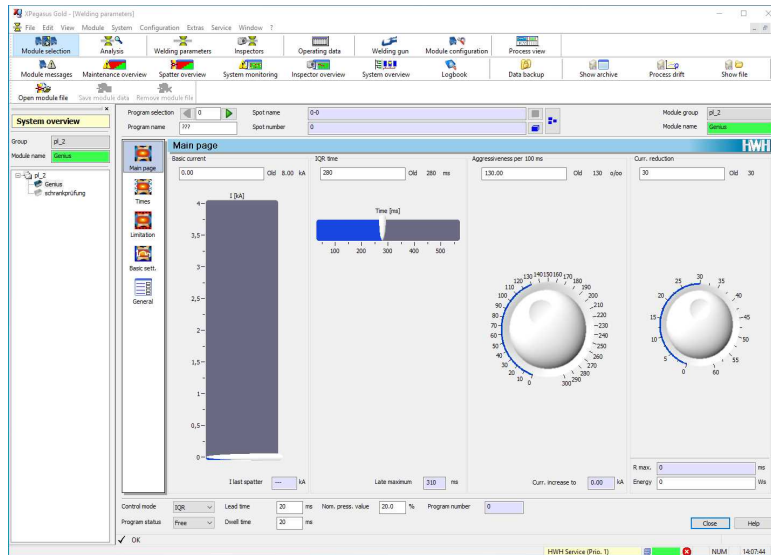
Analyse your process

Recent weld feedback data is graphically shown in the analysis window. This is a power tool in the commissioning phase as well every day to check weld processes. You therefore have a tool for analysing, diagnosing and monitoring your welding processes.

Create your own reports by exporting data such as program parameters, e.g. to Excel, with just one click. A log book documents all changes for you. Back-up your data with the integrated data back-up system.

Maintain an overview

Depending on application, X Pegasus enables operation of your modules, which you can group individually as required. This provides you with a quick overview of your production, or individual machines, cells or entire systems if desired.



The Universal interface

X Pegasus Silver identifies weld timers connected and shows what these timers have installed.

Weld timers suitable are:

- GeniusMFI, GeniusHWI
- GeniusAC
- HWI 28XX EVA / EVA-IQR
- Ratia 73 IQ0 bis IQ2

Also in mixed operation, of course.

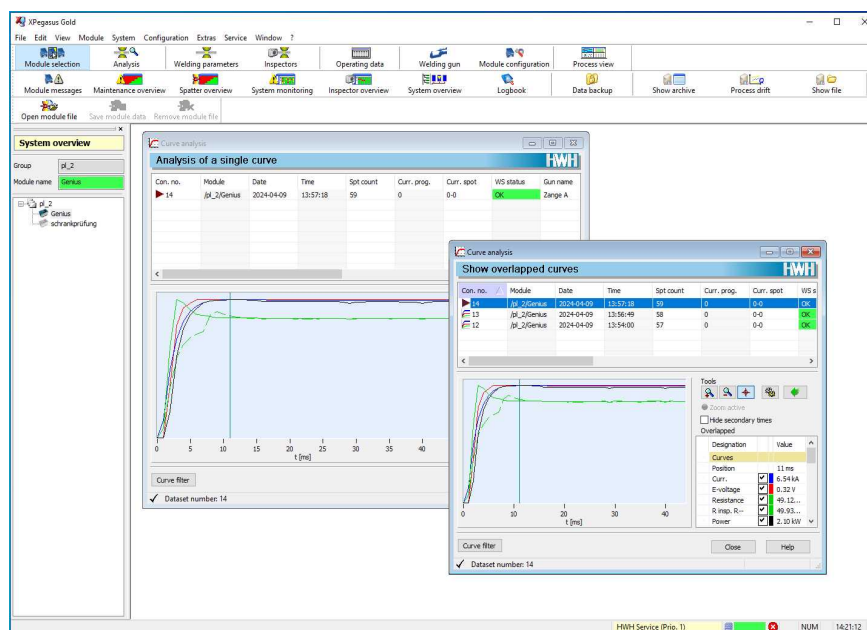
XPegasus Gold

Controlling, operating and archiving

The XPegasus Gold extends XPegasus Silver by an SQL database for documentation of weld parameters. Up to 60 modules can be connected and administrated typically.

Monitor your welding processes

XPegasus Gold allows the user to review your welds by viewing the database.



Secure your knowledge

XPegasus Gold integrates various databases, which you can select as required, to archive your data.

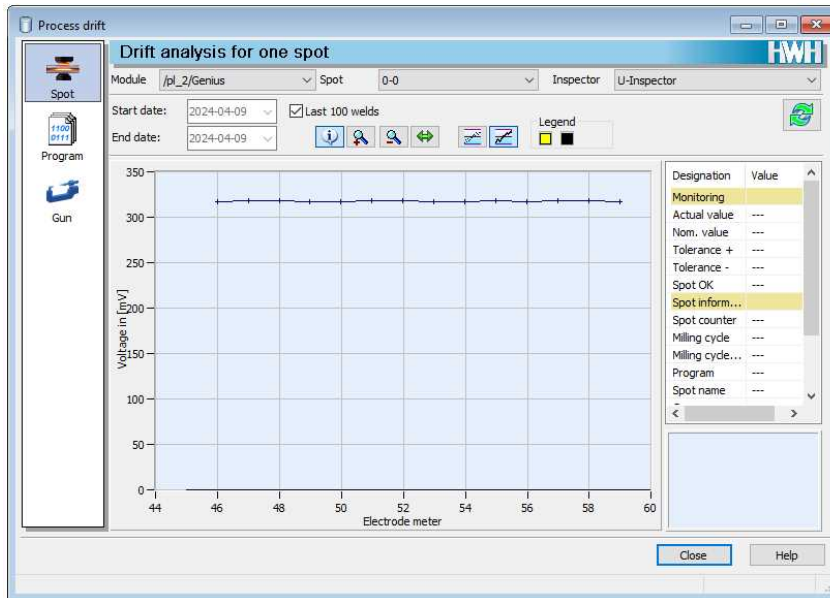
XPegasus Gold highlights:

- Graphical programming incl. IQR Easy (available as a Genius option)
- Excel integration for importing and exporting data
- Program wizards for quick configuration

Increase your machine availability

The XPegasus drift analysis supports you in solution finding.

Here, you can monitor the course of your welding processes over time and any possible deviations.



The universal user interface

XPegasus Gold slots perfectly into the Harms & Wende control systems.

Use XPegasus Gold to operate your

- GeniusMFI, GeniusHWI
- GeniusAC
- HWI 28XX EVA / EVA-IQR
- Ratia 73 IQ0 bis IQ2

Also in mixed operation, of course.

XPegasus Platinum

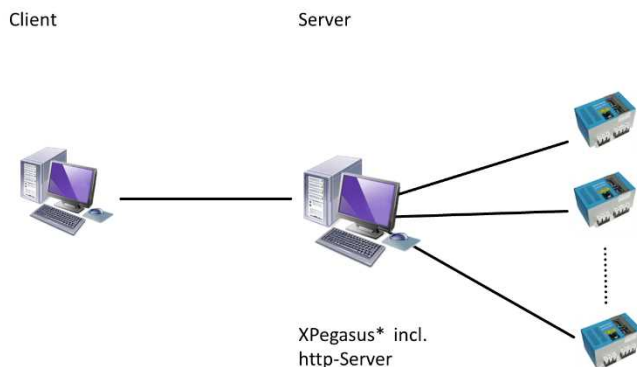
Controlling, operating, archiving and as a server-client application

XPegasus Platinum extends the Gold version by a dedicated server solution. It's the dedicated solution for large systems in large and divided productions over different plants. You can therefore comfortably access a module from various workstations (client PC). The server takes care of the details, e.g. archiving your process data. The up to eight client PCs function as control computers on the machines/in the systems.

XPegasus Platinum enables up to 60 modules to be administered.

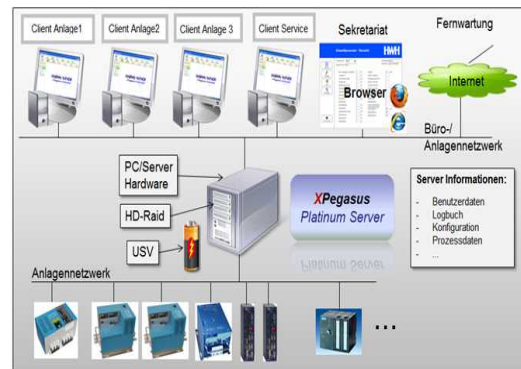
Monitor your welding processes

XPegasus Platinum enables you to access all modules connected to the server from any client.



Increase your machine availability

XPegasus Platinum also supports you in solution finding. A wizard guides you through typical situations. Ensuring that you quickly regain control of your process and save money!



Information at any time

XPegasus Platinum integrates various databases, which you can select as required, to archive your data. Back up your data – security for you.

XPegasus Platinum highlights:

- Graphical programming incl. IQR Easy (available as a Genius option)
- Excel integration for importing and exporting data
- Program wizards for quick configuration
- Access to a module possible from various workstations/clients
- Server-client application

The universal user interface

XPegasus Platinum slots perfectly into the Harms & Wende control systems.

Use XPegasus Platinum to operate your

- GeniusMFI, GeniusHWI
- HWI EVA and EVA-IQR
- Ratia43/73

Also in mixed mode, of course!

XPegasus *Platinum compact*

Server/client solution for small installations

The **X**Pegasus **Platinum compact** is the smaller brother of **X**Pegasus **Platinum** offers all functions as the bigger model and is only limited to 10 modules. It is offered for a lower and affordable price.

XPegasus **Platinum compact** server solution, the software variant with maximum functionality, allows centralized management of multiple installations. This means that all data (archive, backup files, log files, etc.) are always stored on the central server and are accessed from there by any type of client (line PC, service laptop, office PC, etc.). If a customer-specific part number of the welded components is assigned to each stored process data record, the production process can be traced back in the archive at any later time using this number (so-called traceability).

As **X**Pegasus **Platinum** also the compact version can be extended by an OPC UA interface.

Target group / users

Small part welding, Tier 1 suppliers and users with small networked systems with one or more Genius inverters.

Advantages

XPegasus **Platinum compact** version offers you a significant economic advantage when the full strength of the full version is not required due to the small size of the installation. However, no other function is limited except reduced network capacity.

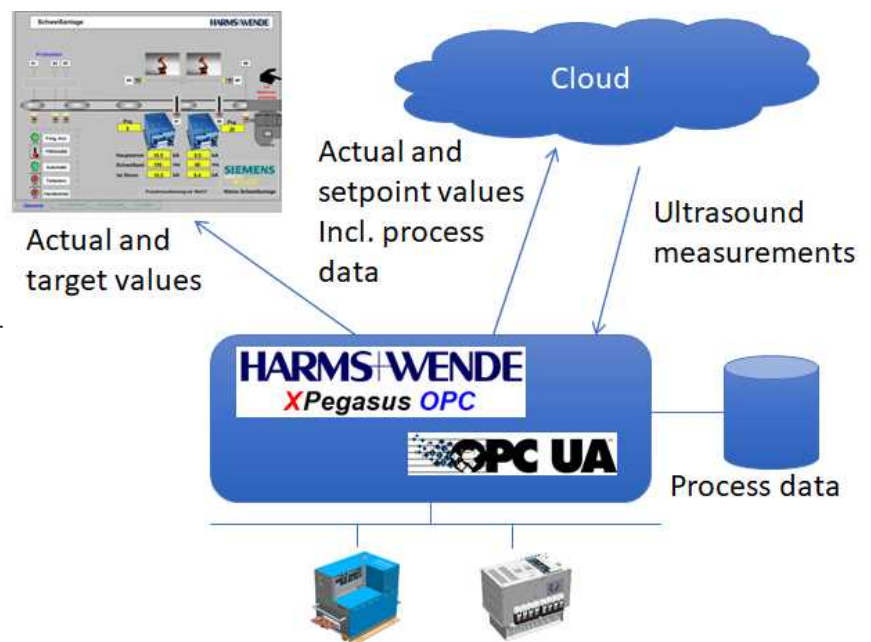
In addition, **X**Pegasus **Platinum compact** can be considered as an entry-level variant into the **Platinum** functionality. If your plant becomes larger in the future or if you then want to integrate several plants into a cluster, the software can always be converted into the full version or subsequent license **X**Pegasus **Platinum** by upgrading accordingly.

XPegasus Platinum OPC-(UA)

XPegasus Platinum OPC-UA

XPegasus Platinum OPC version is available for flexible integration of process data in various higher-level customer systems (up to the cloud). The proven open communication standard can be regarded as the world language for industrial technology and enables machines to communicate with each other regardless of manufacturer.

The functionality of the integrated interface enables not only the pure retrieval of archive data, but also a transparent and extensive machine-to-machine communication (e.g. with PLC), which can give you many advantages when designing your plant architecture.



Advantages

With an OPC UA interface in the XPegasus database, you can, for example, archive the additional component-related inspection data, such as the measurement data from ultrasound, inspection cameras, etc. On the other hand, you can use it to transfer the selected archive data from XPegasus to the higher-level central database in order to manage it further according to your own IT concept.

We recommend that you take advantage of a training course when using this technology for the first time. Our experts will help you and your team to make integration into your application as easy as possible so that you don't lose any time. Get in touch with us.